

# Eye-Safe erbium glass Laser



## Product Features

- Employing an erbium glass laser pumped by a Laser Diode (LD), the output wavelength falls within the eye-safe band (1.4~2.0 $\mu$ m), and the beam quality approaches the diffraction limit.

## Applications

- Laser rangefinding, laser irradiation, LiDAR, laser pointer



Compact Size



Low Energy Consumption



Narrow Pulse Width



Eye-Safe Band



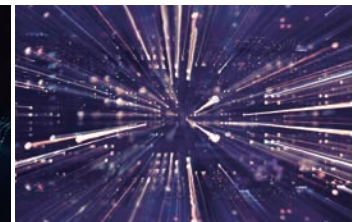
High Peak Power



Working at All Temperatures



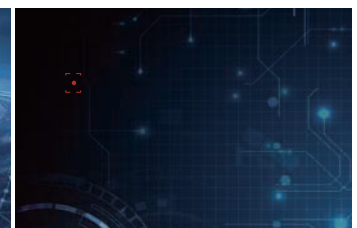
Laser Rangefinding



Laser Irradiation



LiDAR



Laser Pointer

Model		P-1535-100u-C1	P-1535-200u-M2	P-1535-300u-M2	P-1535-400u-M2
Basic	Peak Wavelength	1535±5 nm			
	Mono-Pulse Energy	~100 μJ	~200 μJ	~300 μJ	~400 μJ
	Power Fluctuation (RMS)	≤3%			
	Operating Frequency	1~10 Hz			1~5 Hz
	Pulse Width	4ns±1 ns			5.5ns±1 ns
	Beam Divergence Angle	0.6mrad ±0.1mrad	0.3mrad ±0.05mrad		
Electrical	Power Supply Mode	~ 2 V,12A,~1ms	~ 2 V,12A,~2ms	~ 2 V,12A,~2ms	~ 2 V,15A,~2ms
	Power Consumption	<30mW/Hz	<60mW/Hz		<135mW/Hz
Physical	Weight	≤12g	≤16g		≤30g
Environment	Operating Temperature	-40°C~+75 °C			-40°C~+65 °C
	Storage Temperature	-45°C~+80°C			